

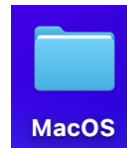


TP Keyboard Tool – User Guide

(MacOS)

Installation

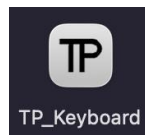
1. **Download** the attached file and open it.



2. Locate the file shown below and **double-click** it.

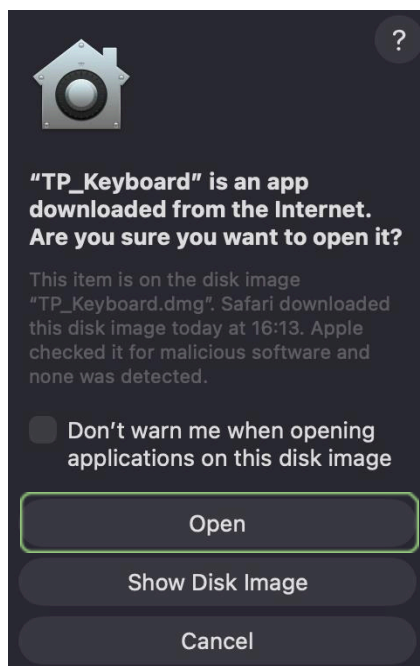


3. The **TP Keyboard** icon will appear. **Double-click** it to open the TP Keyboard app.

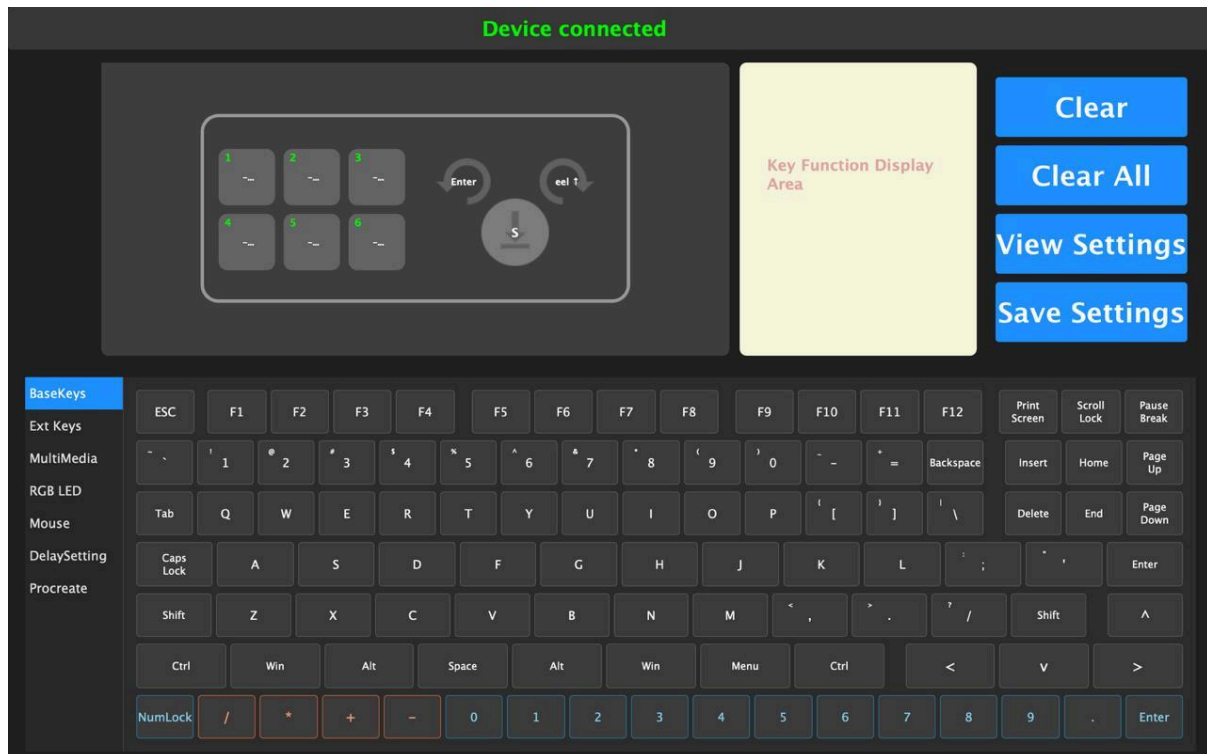


4. When opening the TP Keyboard app for the first time, macOS may display a **security message** like the one shown below.

Click **Open** to continue.



5. After clicking **Open**, the **TP Keyboard customization program** will open automatically.



Key Setup

Make sure your keyboard is connected before configuring your keys.

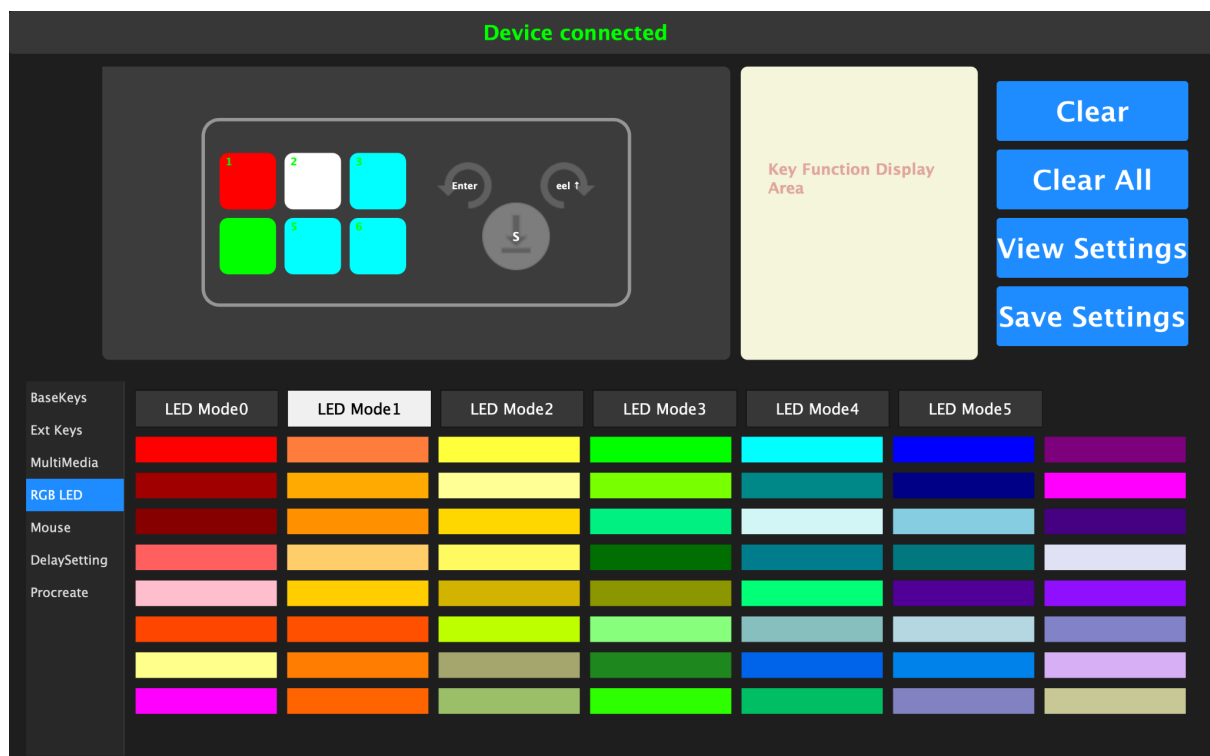
1. Click on the key you want to configure (e.g. KEY 1).
2. Press **Clear** to remove the current shortcut.
3. Enter your desired key combination (e.g. **Alt + S**).
4. Click **Save Settings** to apply.

Repeat this for all keys you want to customize.

LED Lighting Setup

1. In the left-side menu, select the **LED lighting** section.
2. At the top, click the key you want to modify.
3. Choose the color or lighting mode you want to apply.
4. Click **Save Settings** to save the new configuration.
5. Press any key on the device to activate the saved setting if needed.

The software may also include different built-in lighting modes that you can choose from.



Using the Keyboard

1. Open your trading platform.
2. Make sure the platform supports **hotkeys**.
3. Enable **Hotkey Trading** in the platform settings.

Notes

- The keyboard works as a standard input device (it sends key commands).
- Some platforms have predefined shortcuts, while others allow full customization.
- After each change, always click Save Settings.
- If settings do not apply immediately, press any key on the device once.
- If it doesn't work:
 - check if hotkeys are enabled
 - check for shortcut conflicts in the platform

TP Default Settings

Trading Actions:

KEY1 (Shift + S) → SELL

KEY2 (Shift + T) → LIMIT

KEY3 (Shift + V) → CANCEL

KEY4 (Shift + B) → BUY

KEY5 (Shift + D) → MARKET

KEY6 (Shift + C) → CLOSE

Chart Controls (K1 Dial):

K1 Left (Scroll Down) → Zoom Out

K1 Right (Scroll Up) → Zoom In

Center Button:

K1 Center → Enter / Confirm

Key Colors:

KEY1 (SELL) → Red

KEY2 (LIMIT) → White

KEY3 (CANCEL) → White

KEY4 (BUY) → Green

KEY5 (MARKET) → White

KEY6 (CLOSE) → White

Disclaimer

This product is a tool for executing user-defined commands and does not provide trading signals, financial advice, or automated decision-making.

Trading involves risk. Use of this keyboard does not guarantee profits or improved performance. All trading decisions are made solely by the user.

We are not responsible for any financial losses, missed trades, execution errors, or other damages resulting from the use or misuse of this product. Users are responsible for correctly configuring the device and verifying all actions before execution.